

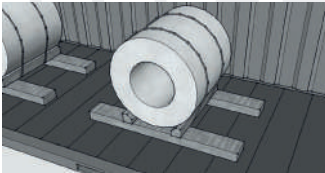
TRANSPORT OF COILED MATERIALS IN CONTAINERS

StopLoss 13 - 2016

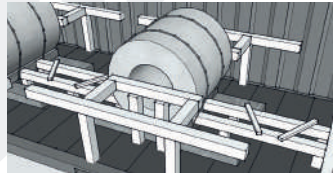
The packing of coiled materials is a systematic process, requiring consideration of load distribution, packing, blocking/bracing and lashing. Follow these basic rules:

- **The maximum gross mass** (cargo + bedding and securing ('payload') + tare mass of the unit) **of the container should not be exceeded**
- The cargo mass should be distributed over sufficient length of the container floor
- Coils should not rest directly on the container floor
- Cradles (also known as 'wedge beds') may be used to support and retain the coils
- Coils should be adequately secured to the cradle or support arrangements
- Ensure coils are secured adequately and cannot move inside the container
- Blocking/bracing should be used to secure the coil and may be used in combination with lashing gear attached to the anchor points situated on the base structure of the container

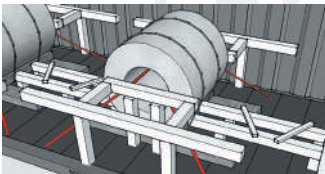
1. Eye to side



Bedding beams

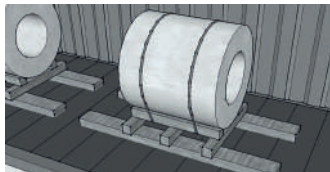


Blocking/bracing

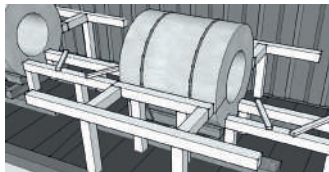


Lashing

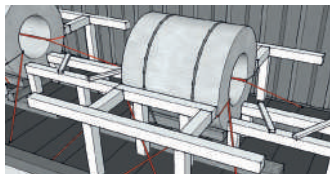
2. Eye to rear



Bedding beams

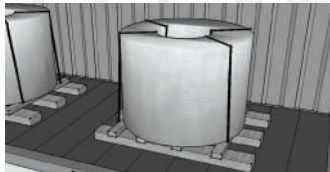


Blocking/bracing

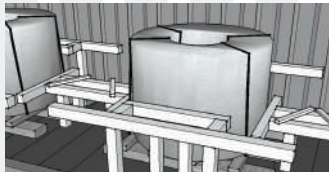


Lashing

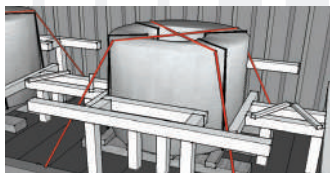
3. Eye to sky



Bedding beams



Blocking/bracing



Lashing